

# ALUMA-FORM, INC.



**Aluma-Form, Inc.**  
3625 Old Getwell Road  
Memphis, TN 38118  
P.O. Box 18555 • Memphis, TN 38181-0555  
Phone 901-362-0100  
Fax 901-794-9515

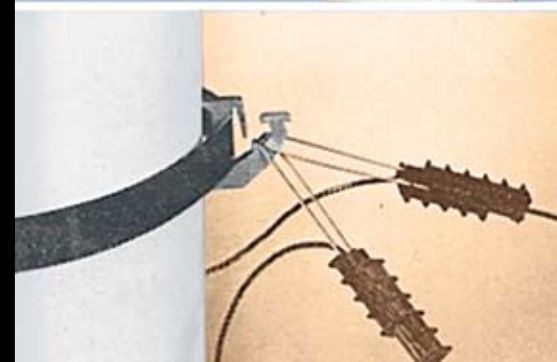
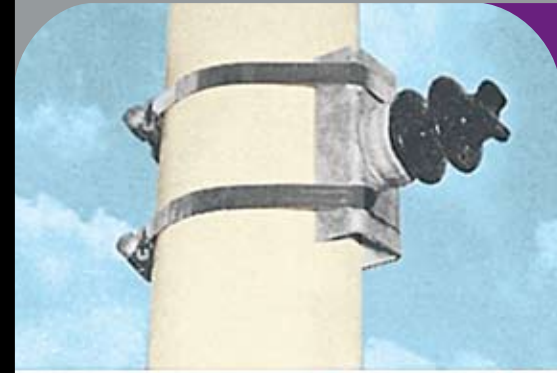
[www.alumaform.com](http://www.alumaform.com)

©2008 Aluma-Form, Inc.-7/08/1M



# BOLT-A-BAND CATALOG

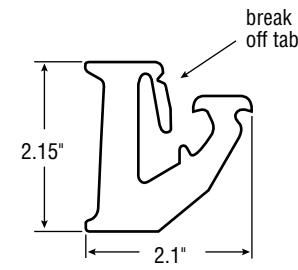
ALUMA-FORM, INC.



**BANDED SERVICE DROP ATTACHMENT**

CATALOG #	WEIGHT /EA.	STD. CARTON	DESCRIPTION
BSD-38	.082 lbs.	50	Banded Service Drop Maximum working load <b>1,000 lbs.</b>

Attaches with 3/4" or 1 1/4" Band

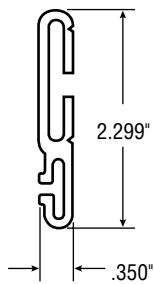


**Banded Service Drop Attachment**

**BANDED CABLE TIE RETAINER**

CATALOG #	WEIGHT /EA.	STD. CARTON	DESCRIPTION
CTR	.016 lbs.	100	Banded Cable Tie Retainer for use with either 3/4" or 1 1/4" Band.

For use with 3/4" or 1 1/4" Band

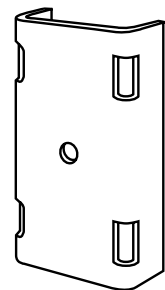


**Banded Cable Tie Retainer**

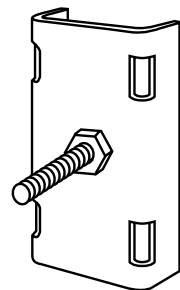
**GENERAL PURPOSE MOUNT**

CATALOG #	WEIGHT /EA.	STD. CARTON	DESCRIPTION
D-4080	6.5 lbs.	5	Mounting bracket of 3/4" Galvanized Steel, 10" x 5" formed channel with 2 1/2" legs, 1 3/16" mounting hole.
D-4080-BS1	7.26 lbs.	5	10" x 5" Mounting bracket with 5/8" carriage bolt
D-4080-BS2	10.56 lbs.	5	14" x 5" Mounting bracket with 2 5/8" carriage bolts

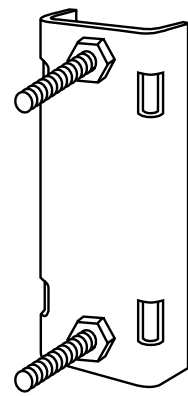
Attaches with 1 1/4" Band



**General Purpose Mount D-4080**



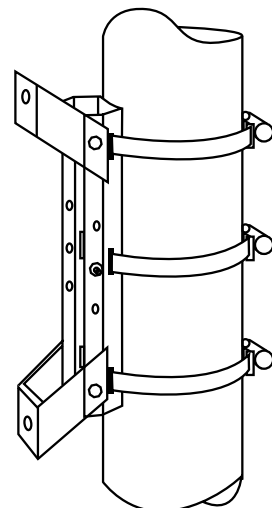
**Mount D-4080-BS1**



**Mount D-4080-BS2**

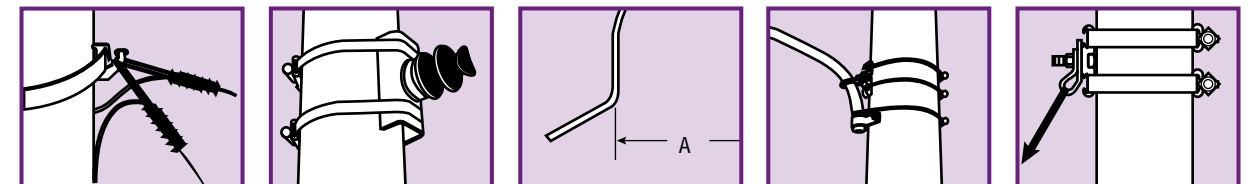
**TRANSFORMER MOUNTING BRACKET**

CATALOG #	WEIGHT /EA.	STD. CARTON	DESCRIPTION
BB-5M1-6LB	9.3 lbs.	5	Aluminum transformer bracket Adjustable to 12" or 24" lug spacing



**For Mounting Equipment on Most Steel, Wood, or Concrete Poles**

Bolt-A-Band™ lets you mount equipment on round, square or irregular shaped poles without drilling holes. Bolt-A-Band™ features a pre-cut, high quality stainless steel band with accompanying installation hardware. Adjusts easily to fit most any size pole. Installs in just minutes with no special tools required. Use it as shown, for equipment mounting... or create your own applications! Call Aluma-Form inside sales for more information.

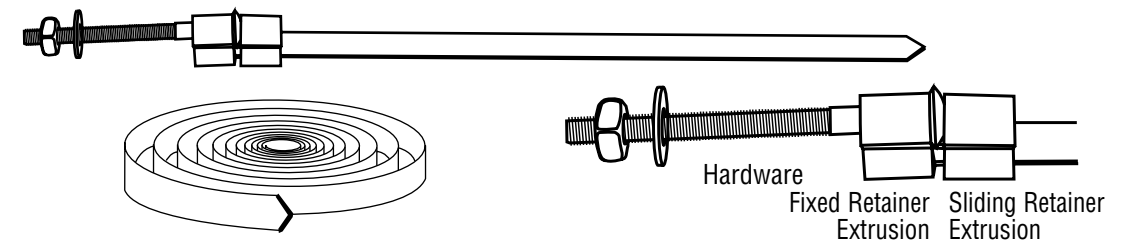


Banded Service Drop    Mounting Post Insulator    Conduit or U-Guard    Lighting Brackets    Guy Attachment

**How to Select Proper Size**

**Band Width** – Bolt-A-Band™ is available in 3/4" and 1 1/4" band widths and many lengths for mounting a variety of equipment. Generally, use 3/4" band for lighter loads (cabinets, telephone drops, U-Guards, co-axial cable, etc.), and 1 1/4" band for high tension loads.

**Band Length** – Proper length is easily determined by placing equipment to mounted against pole or structure at mounting position. Measure total length needed around structure, add six (6) inches and round up to next standard length to determine correct length to order. Installation instructions are always included with each Bolt-A-Band™ order.



Hardware  
Fixed Retainer Extrusion    Sliding Retainer Extrusion

**STANDARD LENGTH SINGLE BAND**

CATALOG #	WEIGHT/EA.	STD. CARTON	HARDWARE	LENGTH	BAND
BAB-3836	.75 lb.	24	3/8"	36"	3/4"
BAB-3840	.80 lb.	24	3/8"	40"	3/4"
BAB-3848	.85 lb.	24	3/8"	48"	3/4"
BAB-3860	.90 lb.	24	3/8"	60"	3/4"
BAB-3872	.98 lb.	24	3/8"	72"	3/4"
BAB-3884	1.10 lbs.	24	3/8"	84"	3/4"
BAB-5836	1.80 lbs.	24	5/8"	36"	1 1/4"
BAB-5840	1.85 lbs.	24	5/8"	40"	1 1/4"
BAB-5848	1.95 lbs.	24	5/8"	48"	1 1/4"
BAB-5860	2.10 lbs.	24	5/8"	60"	1 1/4"
BAB-5872	2.30 lbs.	24	5/8"	72"	1 1/4"
BAB-5884	2.50 lbs.	24	5/8"	84"	1 1/4"

**SPECIFICATIONS**

**Stainless Steel Band** – Type 201 annealed Stainless Steel with minimum tensile of 95,000 P.S.I., and minimum yield of 45,000 P.S.I. Furnished in sizes of .030" thickness x 3/4" width and .044" thickness x 1 1/4" width.

**Aluminum Hardware Extrusions** – 6061-T6 Aluminum Alloy. This alloy conforms to ASTM B 221. A minimum tensile strength 38,000 P.S.I., and minimum yield strength of 35,000 P.S.I.

**Carriage Bolt** – High strength Grade 5 carriage bolt (ASTM A-449), furnished in 3/8" x 6" and 5/8" x 8" sizes.

**STANDARD 100' LENGTH BANDS**

CATALOG #	WEIGHT EACH	STD. CARTON	HARDWARE	LENGTH	BAND
3/4-201-SSB-100	8.00 lbs.	1	3/8"	100'	3/4"
1 1/4-201-SSB-100	19.00 lbs.	1	5/8"	100'	1 1/4"

**BUCKLES FOR 100' BANDS**

CATALOG #	WEIGHT EACH	STD. CARTON
BAB 38	.5 lbs.	24
BAB 58	1.25 lbs.	24

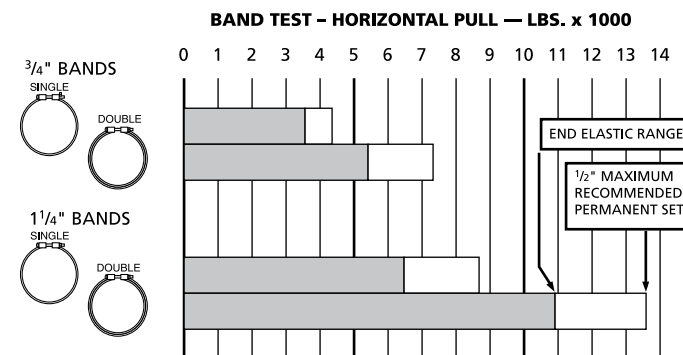
**STANDARD LENGTH DOUBLE BAND**

CATALOG #	WEIGHT/EA.	STD. CARTON	HARDWARE	LENGTH	BAND
BAB-5836-2	3.50 lb.	24	5/8"	36"	1 1/4"
BAB-5848-2	4.00 lb.	24	5/8"	48"	1 1/4"
BAB-5888-2	7.50 lb.	24	5/8"	88"	1 1/4"

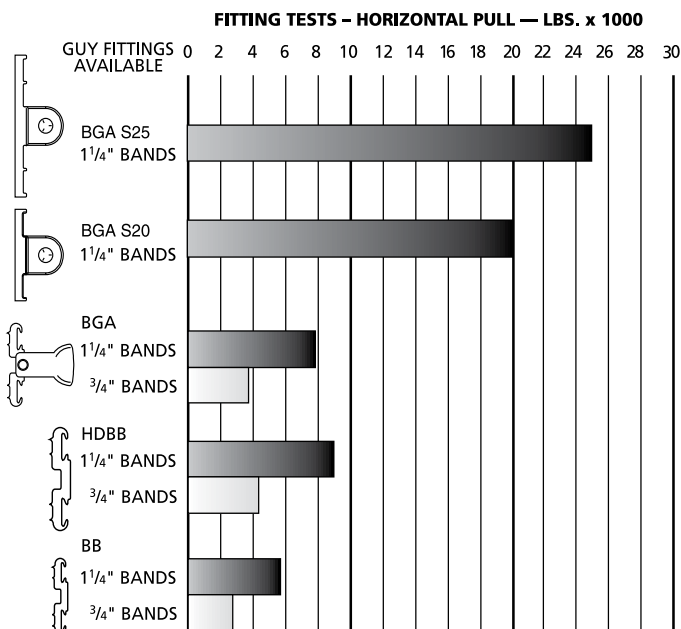
**BANDING STRENGTH TESTS**

**MAXIMUM BAND CAPACITY**

These tests were conducted with special large steel fittings to illustrate the maximum recommended loadings of the stainless steel bands. Aluminum alloy fittings such as the BGA, HDBB, or BB are generally weaker than these values. For stronger hardware, contact the factory.

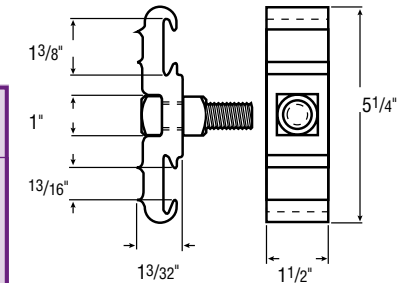


**BAND STRENGTH WITH ALUMINUM OR STEEL ALLOY FITTINGS**



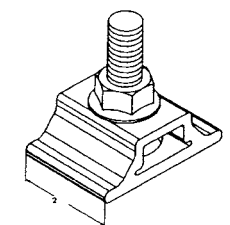
**ALL PURPOSE MTG. BRACKET (LOCATES 5/8" BOLT)**

CATALOG #	WEIGHT	STD. CARTON	DESCRIPTION
BB-1511-H	.60 lb.	24	Light Duty Mount with Standard, 5/8" x 2" Bolt.
HDBB-1511-H	.85 lb.	24	Heavy Duty Mount with Standard, 5/8" x 2" Bolt.
HDBB-1511-H3H	1.00 lb.	24	Heavy Duty Mount with Grade 5, 5/8" x 3" Bolt.
HDBB-1511-H3.5H	.96 lb.	24	Heavy Duty Mount with Grade 5, 5/8" x 3 1/2" Bolt.
BB-211-SB-2	.586 lb.	24	3/4" Band Light Duty Mount with standard 5/8" x 2" Bolt.



**Mounting Bracket (HDBB Series shown)**

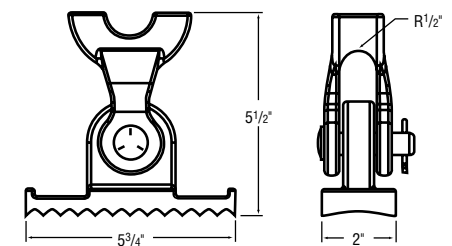
Attaches with 1 1/4" Band



**BB-211-SB-2**

**BANDED GUY ATTACHMENT WITH CLEVIS**

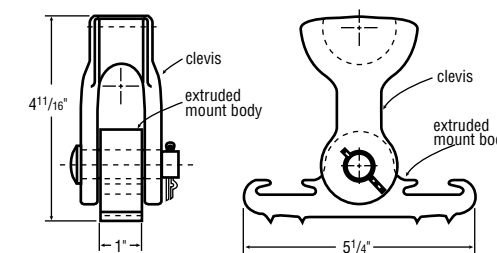
CATALOG #	WEIGHT /EA.	STD. CARTON	DESCRIPTION
BGA-100	1.50 lbs.	24	Regular Duty Banded Guy Attachment with Clevis.
* BGA-S20	2.60 lbs.	24	Heavy Duty Banded Guy Attachment with Clevis.
* BGA-S25	4.259 lbs.	24	Extra Heavy Duty Banded Guy Attachment with Clevis.



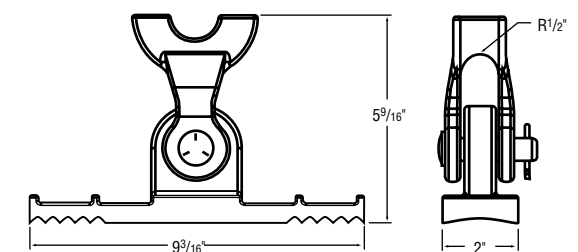
**BGA-S20**

Attaches with 1 1/4" Band

\*Double thickness bands must be used for these applications. Refer to page 13 for additional information.



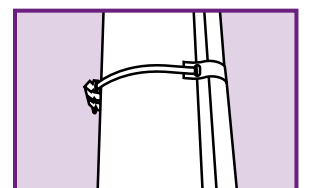
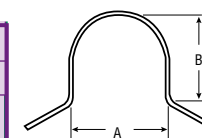
**BGA-100**



**BGA-S25**

**CONDUIT AND U-GUARD STRAPS**

CATALOG #	WEIGHT /EA.	STD. CARTON	DESCRIPTION		
			FOR	A	B
BST-1	.07 lbs.	24	1"	1 6/19"	1 6/19"
BST-2	.11 lbs.	24	2"	2 3/8"	2 3/8"
BST-3	.15 lbs.	24	3"	3 1/2"	3 1/2"
BST-4	.17 lbs.	24	4"	4 1/2"	4 3/8"
BST-5	.23 lbs.	24	5"	5 9/16"	5 7/16"
BST-6	.27 lbs.	24	6"	6 5/8"	6 1/2"



**Conduit and U-Guard Straps**

Attaches with 3/4" Band