



# FIBERGLASS GUY STRAIN INSULATORS





# FIBERGLASS GUY STRAIN INSULATORS

## The Best Option for Fiberglass Guy Strain Insulators!

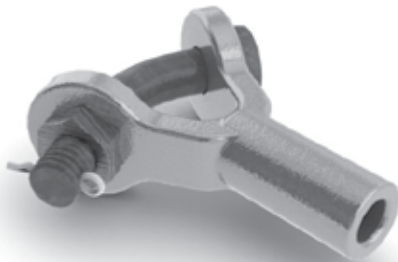


Fiberglass Guy Strain Insulators are now available with the quality and performance you expect from Aluma-Form. Versions are available with 16,000 lb. & 21,000 lb. minimum ultimate strength ratings, and several different end fittings.



### **The Aluma-Form Advantage Superior Performance**

The Super-Smooth™ fiberglass rod provides superior strength and durability. Since the fiberglass rod is 5 times smoother than the leading competitor, Aluma-Form's proprietary veiled fiberglass design provides superior UV, tracking and abrasion resistance.



### **Aluma-Form Quality**

Aluma-Form has a long history of providing quality products for the Electric Utility industry. You can expect the same quality in every guy strain insulator you receive, helping the job get done right the first time.



### **Speed and Flexibility**

Need your guy strain insulator custom designed? No problem – just contact us or your local representative. With the best lead-times in the industry, Aluma-Form can deliver your guy strain insulators when you need them!



# FIBERGLASS GUY STRAIN INSULATORS

## Catalog Number System

**FGS 16 - 78 C T**

**Catalog Series**

Fiberglass Guy Strain Insulators

**Minimum Ultimate**

**Strength Rating (lbs.)**

16 = 16,000

21 = 21,000

**Nominal Length<sup>1</sup>**

12 = 12"

18 = 18"

24 = 24"

36 = 36"

42 = 42"

54 = 54"

60 = 60"

78 = 78"

96 = 96"

120 = 120"

144 = 144"

**End Fitting, 2nd**

C = Clevis

R = Clevis with Roller

Y = "Y" Clevis

T = Thimble Eye

**End Fitting, 1st**

C = Clevis

R = Clevis with Roller

Y = "Y" Clevis

T = Thimble Eye

**Notes:**

1. Custom lengths available, contact factory or local sales representative.



ALUMA-FORM®

# FIBERGLASS GUY STRAIN INSULATORS

## 16,000 Pound Rating: Clevis & Clevis w/ Roller



### Material Specifications

#### End Fitting

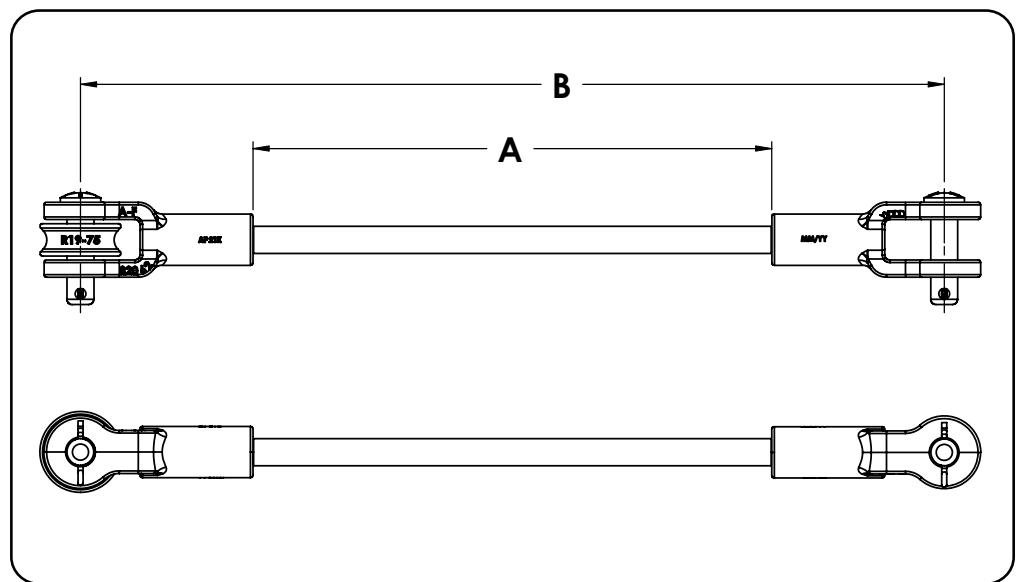
- 65-45-12 Ductile Iron, hot-dipped galvanized per ASTM A153

#### Fiberglass Rod

- Super-Smooth™, proprietary veiled gray polyester rod with added ultraviolet protection

#### Minimum Ultimate Strength Rating

- 16,000 pounds



Catalog Name	Strength, lbs.	Length "A", inches <sup>1</sup>	Length "B", inches	1st End Fitting	2nd End Fitting	Weight, lbs
FGS16-12CR	16,000	12	20	Clevis	Clevis w/ Roller	3.6
FGS16-18CR	16,000	18	26	Clevis	Clevis w/ Roller	3.8
FGS16-24CR	16,000	24	32	Clevis	Clevis w/ Roller	3.9
FGS16-36CR	16,000	36	44	Clevis	Clevis w/ Roller	4.2
FGS16-42CR	16,000	42	50	Clevis	Clevis w/ Roller	4.3
FGS16-54CR	16,000	54	62	Clevis	Clevis w/ Roller	4.6
FGS16-60CR	16,000	60	68	Clevis	Clevis w/ Roller	4.7
FGS16-78CR	16,000	78	86	Clevis	Clevis w/ Roller	5.1
FGS16-96CR	16,000	96	104	Clevis	Clevis w/ Roller	5.5
FGS16-120CR	16,000	120	128	Clevis	Clevis w/ Roller	6.0
FGS16-144CR	16,000	144	152	Clevis	Clevis w/ Roller	6.6

#### Notes:

1. Custom lengths available, contact factory or local sales representatives



# FIBERGLASS GUY STRAIN INSULATORS

## 16,000 Pound Rating: Clevis & Clevis



### Material Specifications

#### End Fitting

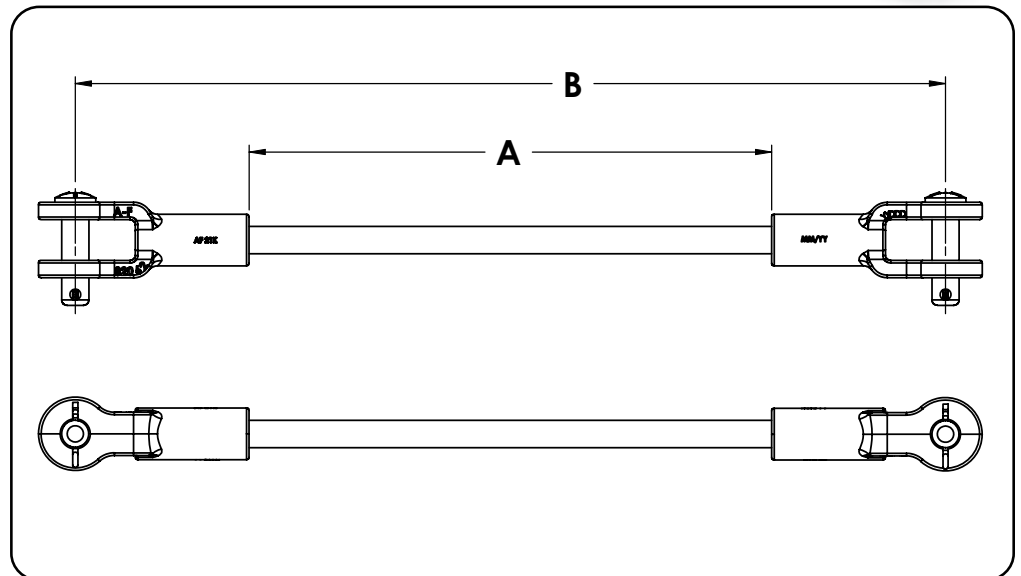
- 65-45-12 Ductile Iron, hot-dipped galvanized per ASTM A153

#### Fiberglass Rod

- Super-Smooth™, proprietary veiled gray polyester rod with added ultraviolet protection

#### Minimum Ultimate Strength Rating

- 16,000 pounds



Catalog Name	Strength, lbs.	Length "A", inches <sup>1</sup>	Length "B", inches	1st End Fitting	2nd End Fitting	Weight, lbs
FGS16-12CC	16,000	12	20	Clevis	Clevis	3.3
FGS16-18CC	16,000	18	26	Clevis	Clevis	3.4
FGS16-24CC	16,000	24	32	Clevis	Clevis	3.5
FGS16-36CC	16,000	36	44	Clevis	Clevis	3.8
FGS16-42CC	16,000	42	50	Clevis	Clevis	3.9
FGS16-54CC	16,000	54	62	Clevis	Clevis	4.2
FGS16-60CC	16,000	60	68	Clevis	Clevis	4.3
FGS16-78CC	16,000	78	86	Clevis	Clevis	4.7
FGS16-96CC	16,000	96	104	Clevis	Clevis	5.1
FGS16-120CC	16,000	120	128	Clevis	Clevis	5.6
FGS16-144CC	16,000	144	152	Clevis	Clevis	6.2

#### Notes:

1. Custom lengths available, contact factory or local sales representatives



ALUMA-FORM®

# FIBERGLASS GUY STRAIN INSULATORS

## 16,000 Pound Rating: Clevis w/ Roller & Clevis w/ Roller



### Material Specifications

#### End Fitting

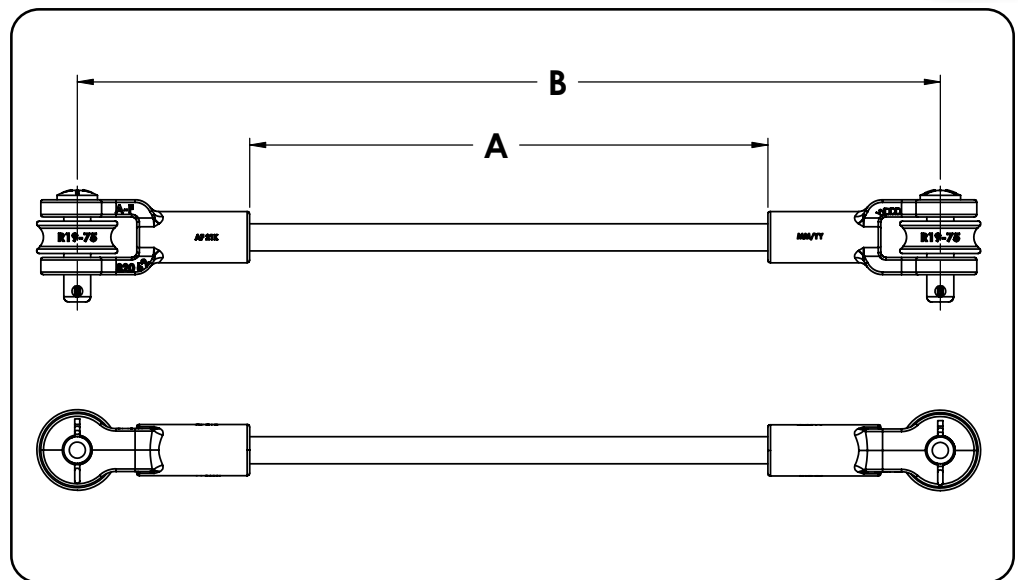
- 65-45-12 Ductile Iron, hot-dipped galvanized per ASTM A153

#### Fiberglass Rod

- Super-Smooth™, proprietary veiled gray polyester rod with added ultraviolet protection

#### Minimum Ultimate Strength Rating

- 16,000 pounds



Catalog Name	Strength, lbs.	Length "A", inches <sup>1</sup>	Length "B", inches	1st End Fitting	2nd End Fitting	Weight, lbs
FGS16-12RR	16,000	12	20	Clevis w/ Roller	Clevis w/ Roller	4.1
FGS16-18RR	16,000	18	26	Clevis w/ Roller	Clevis w/ Roller	4.2
FGS16-24RR	16,000	24	32	Clevis w/ Roller	Clevis w/ Roller	4.3
FGS16-36RR	16,000	36	44	Clevis w/ Roller	Clevis w/ Roller	4.6
FGS16-42RR	16,000	42	50	Clevis w/ Roller	Clevis w/ Roller	4.7
FGS16-54RR	16,000	54	62	Clevis w/ Roller	Clevis w/ Roller	5.0
FGS16-60RR	16,000	60	68	Clevis w/ Roller	Clevis w/ Roller	5.1
FGS16-78RR	16,000	78	86	Clevis w/ Roller	Clevis w/ Roller	5.5
FGS16-96RR	16,000	96	104	Clevis w/ Roller	Clevis w/ Roller	5.9
FGS16-120RR	16,000	120	128	Clevis w/ Roller	Clevis w/ Roller	6.5
FGS16-144RR	16,000	144	152	Clevis w/ Roller	Clevis w/ Roller	7.0

#### Notes:

1. Custom lengths available, contact factory or local sales representatives





# FIBERGLASS GUY STRAIN INSULATORS

## 16,000 Pound Rating: Clevis & Thimble Eye



### Material Specifications

#### End Fitting

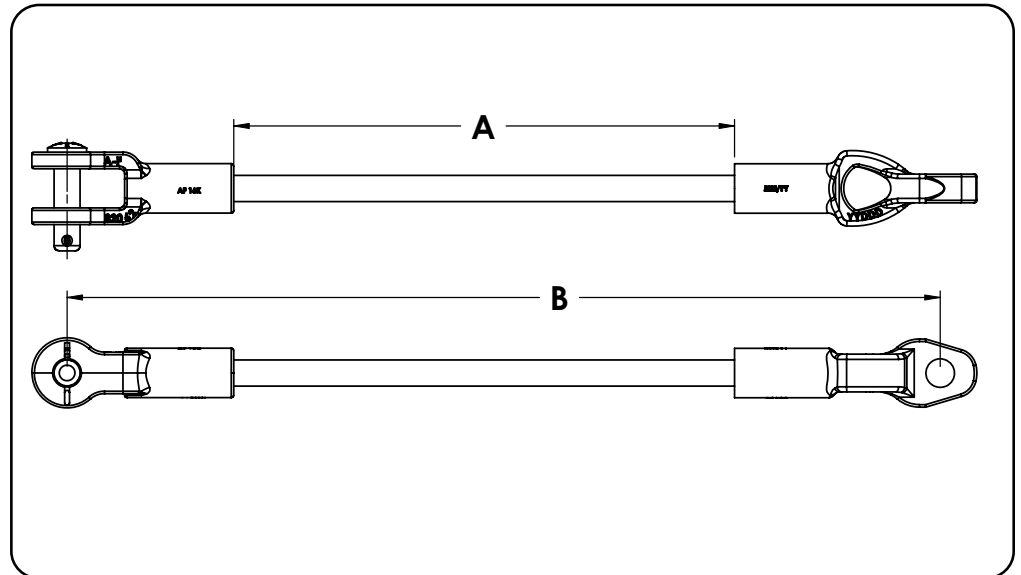
- 65-45-12 Ductile Iron, hot-dipped galvanized per ASTM A153

#### Fiberglass Rod

- Super-Smooth™, proprietary veiled gray polyester rod with added ultraviolet protection

#### Minimum Ultimate Strength Rating

- 16,000 pounds



Catalog Name	Strength, lbs.	Length "A", inches <sup>1</sup>	Length "B", inches	1st End Fitting	2nd End Fitting	Weight, lbs
FGS16-12CT	16,000	12	20.9	Clevis	Thimble Eye	3.2
FGS16-18CT	16,000	18	26.9	Clevis	Thimble Eye	3.3
FGS16-24CT	16,000	24	32.9	Clevis	Thimble Eye	3.4
FGS16-36CT	16,000	36	44.9	Clevis	Thimble Eye	3.7
FGS16-42CT	16,000	42	50.9	Clevis	Thimble Eye	3.8
FGS16-54CT	16,000	54	62.9	Clevis	Thimble Eye	4.1
FGS16-60CT	16,000	60	68.9	Clevis	Thimble Eye	4.2
FGS16-78CT	16,000	78	86.9	Clevis	Thimble Eye	4.6
FGS16-96CT	16,000	96	104.9	Clevis	Thimble Eye	5.0
FGS16-120CT	16,000	120	128.9	Clevis	Thimble Eye	5.6
FGS16-144CT	16,000	144	152.9	Clevis	Thimble Eye	6.1

#### Notes:

1. Custom lengths available, contact factory or local sales representatives



ALUMA-FORM®

# FIBERGLASS GUY STRAIN INSULATORS

## 16,000 Pound Rating: Clevis w/ Roller & Thimble Eye



### Material Specifications

#### End Fitting

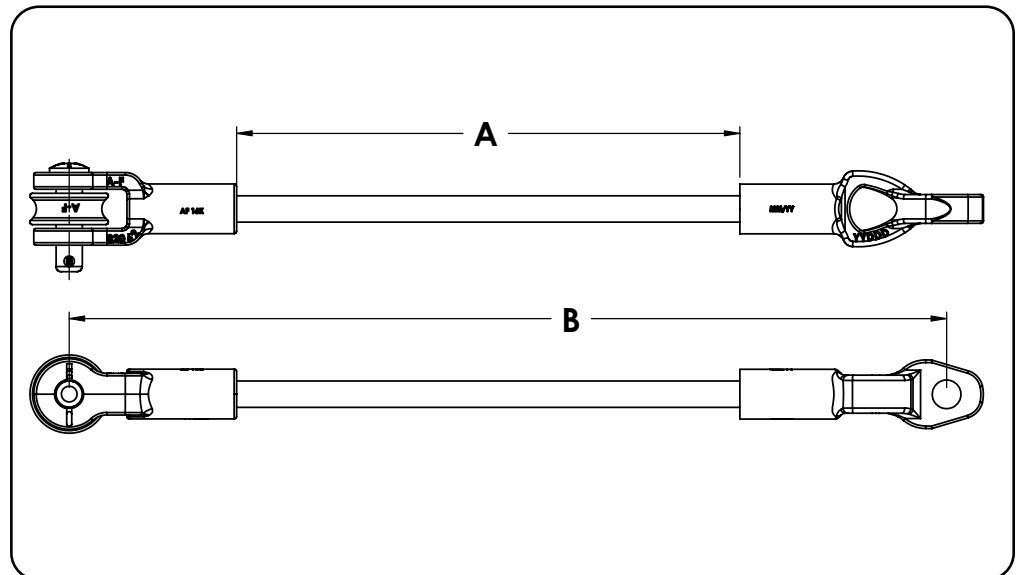
- 65-45-12 Ductile Iron, hot-dipped galvanized per ASTM A153

#### Fiberglass Rod

- Super-Smooth™, proprietary veiled gray polyester rod with added ultraviolet protection

#### Minimum Ultimate Strength Rating

- 16,000 pounds



Catalog Name	Strength, lbs.	Length "A", inches <sup>1</sup>	Length "B", inches	1st End Fitting	2nd End Fitting	Weight, lbs
FGS16-12RT	16,000	12	20.9	Clevis w/ Roller	Thimble Eye	3.6
FGS16-18RT	16,000	18	26.9	Clevis w/ Roller	Thimble Eye	3.7
FGS16-24RT	16,000	24	32.9	Clevis w/ Roller	Thimble Eye	3.8
FGS16-36RT	16,000	36	44.9	Clevis w/ Roller	Thimble Eye	4.1
FGS16-42RT	16,000	42	50.9	Clevis w/ Roller	Thimble Eye	4.2
FGS16-54RT	16,000	54	62.9	Clevis w/ Roller	Thimble Eye	4.5
FGS16-60RT	16,000	60	68.9	Clevis w/ Roller	Thimble Eye	4.6
FGS16-78RT	16,000	78	86.9	Clevis w/ Roller	Thimble Eye	5.0
FGS16-96RT	16,000	96	104.9	Clevis w/ Roller	Thimble Eye	5.4
FGS16-120RT	16,000	120	128.9	Clevis w/ Roller	Thimble Eye	6.0
FGS16-144RT	16,000	144	152.9	Clevis w/ Roller	Thimble Eye	6.5

#### Notes:

1. Custom lengths available, contact factory or local sales representatives





# FIBERGLASS GUY STRAIN INSULATORS

## 16,000 Pound Rating: Thimble Eye & Thimble Eye



### Material Specifications

#### End Fitting

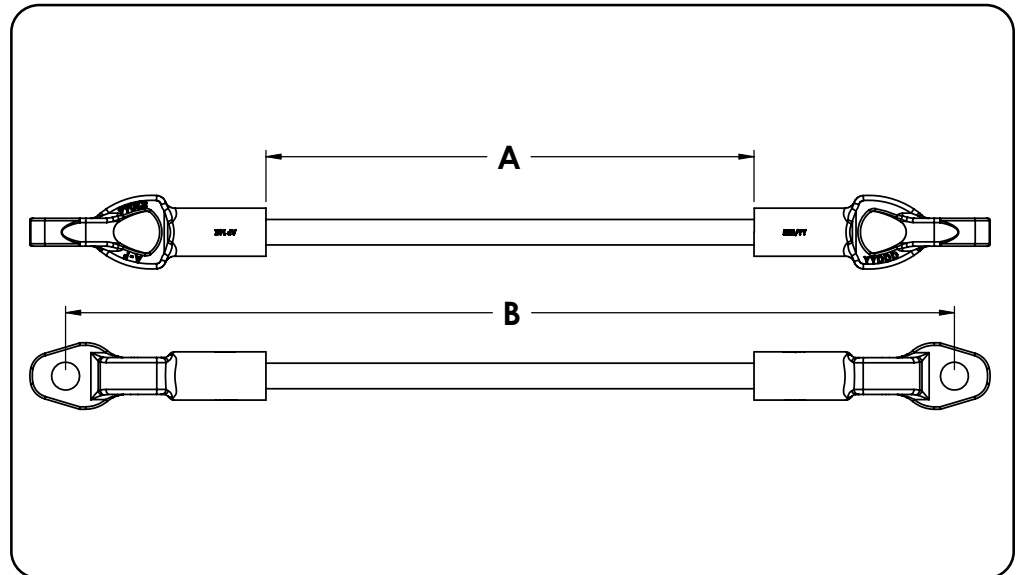
- 65-45-12 Ductile Iron, hot-dipped galvanized per ASTM A153

#### Fiberglass Rod

- Super-Smooth™, proprietary veiled gray polyester rod with added ultraviolet protection

#### Minimum Ultimate Strength Rating

- 16,000 pounds



Catalog Name	Strength, lbs.	Length "A", inches <sup>1</sup>	Length "B", inches	1st End Fitting	2nd End Fitting	Weight, lbs
FGS16-12TT	16,000	12	21.9	Thimble Eye	Thimble Eye	3.1
FGS16-18TT	16,000	18	27.9	Thimble Eye	Thimble Eye	3.2
FGS16-24TT	16,000	24	33.9	Thimble Eye	Thimble Eye	3.3
FGS16-36TT	16,000	36	45.9	Thimble Eye	Thimble Eye	3.6
FGS16-42TT	16,000	42	51.9	Thimble Eye	Thimble Eye	3.7
FGS16-54TT	16,000	54	63.9	Thimble Eye	Thimble Eye	4.0
FGS16-60TT	16,000	60	69.9	Thimble Eye	Thimble Eye	4.1
FGS16-78TT	16,000	78	87.9	Thimble Eye	Thimble Eye	4.5
FGS16-96TT	16,000	96	105.9	Thimble Eye	Thimble Eye	4.9
FGS16-120TT	16,000	120	129.9	Thimble Eye	Thimble Eye	5.5
FGS16-144TT	16,000	144	153.9	Thimble Eye	Thimble Eye	6.0

#### Notes:

1. Custom lengths available, contact factory or local sales representatives



ALUMA-FORM®

# FIBERGLASS GUY STRAIN INSULATORS

## 16,000 Pound Rating: Thimble Eye & Y-Clevis



### Material Specifications

#### End Fitting

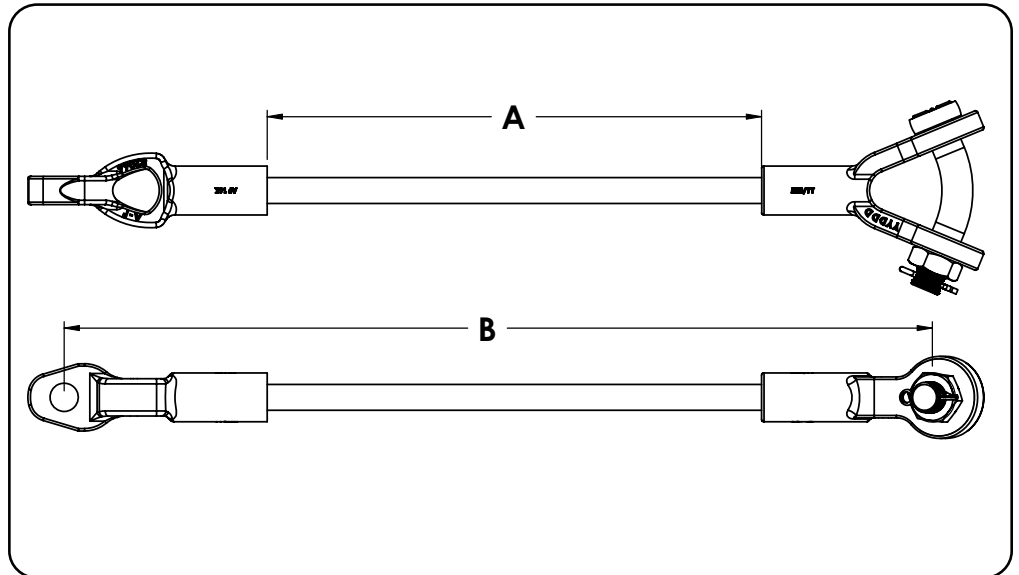
- 65-45-12 Ductile Iron, hot-dipped galvanized per ASTM A153

#### Fiberglass Rod

- Super-Smooth™, proprietary veiled gray polyester rod with added ultraviolet protection

#### Minimum Ultimate Strength Rating

- 16,000 pounds



Catalog Name	Strength, lbs.	Length "A", inches <sup>1</sup>	Length "B", inches	1st End Fitting	2nd End Fitting	Weight, lbs
FGS16-12TY	16,000	12	21.3	Thimble Eye	Y-Clevis	4.0
FGS16-18TY	16,000	18	27.3	Thimble Eye	Y-Clevis	4.2
FGS16-24TY	16,000	24	33.3	Thimble Eye	Y-Clevis	4.3
FGS16-36TY	16,000	36	45.3	Thimble Eye	Y-Clevis	4.6
FGS16-42TY	16,000	42	51.3	Thimble Eye	Y-Clevis	4.7
FGS16-54TY	16,000	54	63.3	Thimble Eye	Y-Clevis	4.9
FGS16-60TY	16,000	60	69.3	Thimble Eye	Y-Clevis	5.1
FGS16-78TY	16,000	78	87.3	Thimble Eye	Y-Clevis	5.5
FGS16-96TY	16,000	96	105.3	Thimble Eye	Y-Clevis	5.9
FGS16-120TY	16,000	120	129.3	Thimble Eye	Y-Clevis	6.4
FGS16-144TY	16,000	144	153.3	Thimble Eye	Y-Clevis	6.9

#### Notes:

1. Custom lengths available, contact factory or local sales representatives



# FIBERGLASS GUY STRAIN INSULATORS

## 21,000 Pound Rating: Clevis & Clevis w/ Roller



### Material Specifications

#### End Fitting

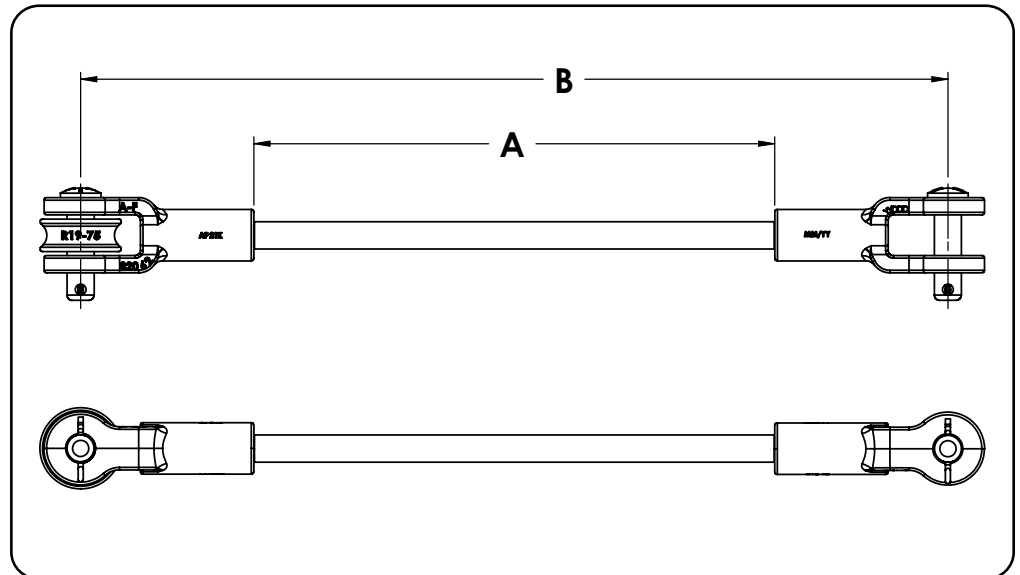
- 65-45-12 Ductile Iron, hot-dipped galvanized per ASTM A153

#### Fiberglass Rod

- Super-Smooth™, proprietary veiled gray polyester rod with added ultraviolet protection

#### Minimum Ultimate Strength Rating

- 21,000 pounds



Catalog Name	Strength, lbs.	Length "A", inches <sup>1</sup>	Length "B", inches	1st End Fitting	2nd End Fitting	Weight, lbs
FGS21-12CR	21,000	12	20	Clevis	Clevis w/ Roller	3.6
FGS21-18CR	21,000	18	26	Clevis	Clevis w/ Roller	3.8
FGS21-24CR	21,000	24	32	Clevis	Clevis w/ Roller	3.9
FGS21-36CR	21,000	36	44	Clevis	Clevis w/ Roller	4.2
FGS21-42CR	21,000	42	50	Clevis	Clevis w/ Roller	4.3
FGS21-54CR	21,000	54	62	Clevis	Clevis w/ Roller	4.6
FGS21-60CR	21,000	60	68	Clevis	Clevis w/ Roller	4.7
FGS21-78CR	21,000	78	86	Clevis	Clevis w/ Roller	5.1
FGS21-96CR	21,000	96	104	Clevis	Clevis w/ Roller	5.5
FGS21-120CR	21,000	120	128	Clevis	Clevis w/ Roller	6.0
FGS21-144CR	21,000	144	152	Clevis	Clevis w/ Roller	6.6

#### Notes:

1. Custom lengths available, contact factory or local sales representatives



# FIBERGLASS GUY STRAIN INSULATORS

## 21,000 Pound Rating: Clevis & Clevis

### Material Specifications

#### End Fitting

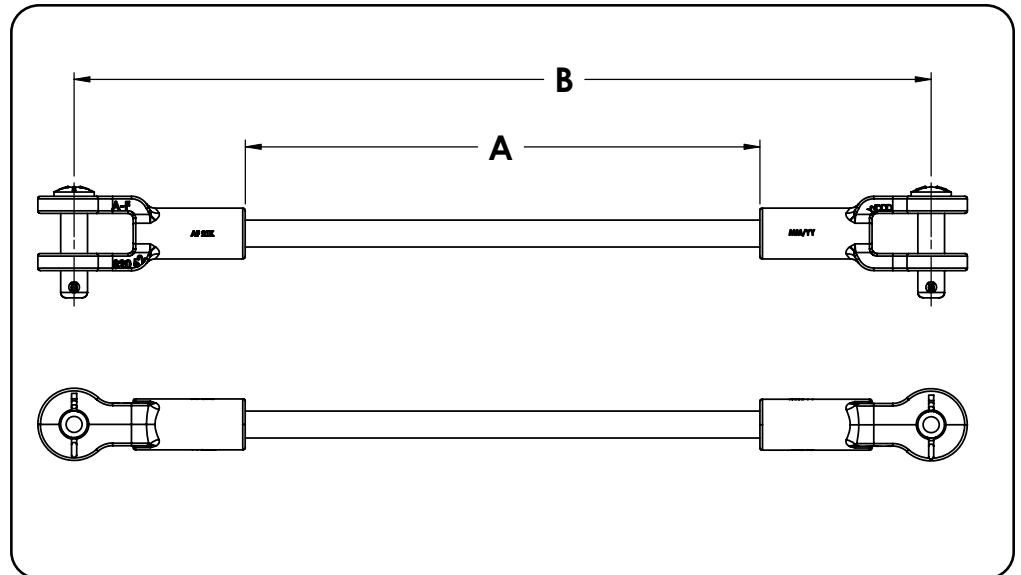
- 65-45-12 Ductile Iron, hot-dipped galvanized per ASTM A153

#### Fiberglass Rod

- Super-Smooth™, proprietary veiled gray polyester rod with added ultraviolet protection

#### Minimum Ultimate Strength Rating

- 21,000 pounds



Catalog Name	Strength, lbs.	Length "A", inches <sup>1</sup>	Length "B", inches	1st End Fitting	2nd End Fitting	Weight, lbs
FGS21-12CC	21,000	12	20	Clevis	Clevis	3.3
FGS21-18CC	21,000	18	26	Clevis	Clevis	3.4
FGS21-24CC	21,000	24	32	Clevis	Clevis	3.5
FGS21-36CC	21,000	36	44	Clevis	Clevis	3.8
FGS21-42CC	21,000	42	50	Clevis	Clevis	3.9
FGS21-54CC	21,000	54	62	Clevis	Clevis	4.2
FGS21-60CC	21,000	60	68	Clevis	Clevis	4.3
FGS21-78CC	21,000	78	86	Clevis	Clevis	4.7
FGS21-96CC	21,000	96	104	Clevis	Clevis	5.1
FGS21-120CC	21,000	120	128	Clevis	Clevis	5.6
FGS21-144CC	21,000	144	152	Clevis	Clevis	6.2

#### Notes:

1. Custom lengths available, contact factory or local sales representatives



# FIBERGLASS GUY STRAIN INSULATORS

## 21,000 Pound Rating: Clevis w/ Roller & Clevis w/ Roller



### Material Specifications

#### End Fitting

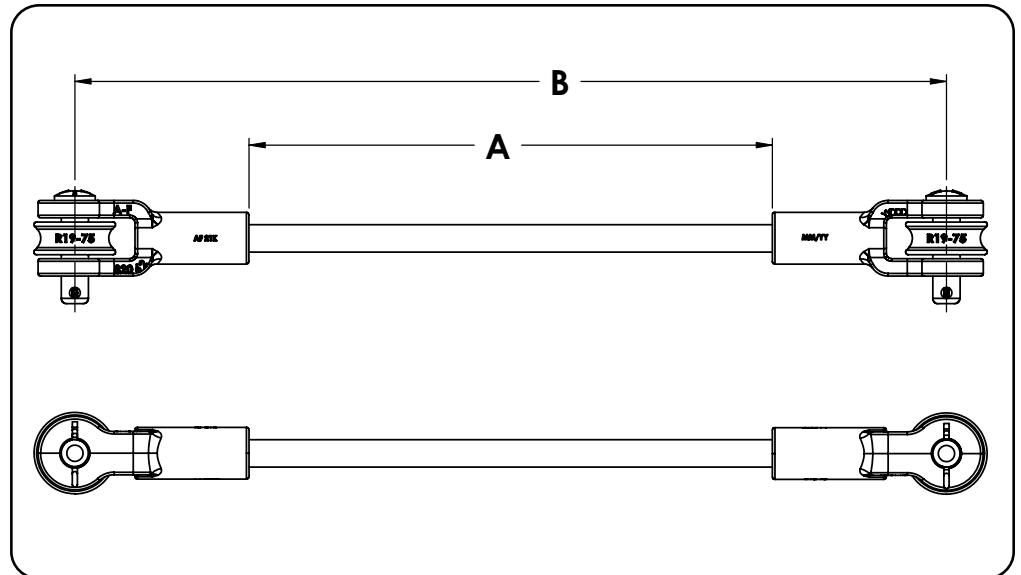
- 65-45-12 Ductile Iron, hot-dipped galvanized per ASTM A153

#### Fiberglass Rod

- Super-Smooth™, proprietary veiled gray polyester rod with added ultraviolet protection

#### Minimum Ultimate Strength Rating

- 21,000 pounds



Catalog Name	Strength, lbs.	Length "A", inches <sup>1</sup>	Length "B", inches	1st End Fitting	2nd End Fitting	Weight, lbs
FGS21-12RR	21,000	12	20	Clevis w/ Roller	Clevis w/ Roller	4.1
FGS21-18RR	21,000	18	26	Clevis w/ Roller	Clevis w/ Roller	4.2
FGS21-24RR	21,000	24	32	Clevis w/ Roller	Clevis w/ Roller	4.3
FGS21-36RR	21,000	36	44	Clevis w/ Roller	Clevis w/ Roller	4.6
FGS21-42RR	21,000	42	50	Clevis w/ Roller	Clevis w/ Roller	4.7
FGS21-54RR	21,000	54	62	Clevis w/ Roller	Clevis w/ Roller	5.0
FGS21-60RR	21,000	60	68	Clevis w/ Roller	Clevis w/ Roller	5.1
FGS21-78RR	21,000	78	86	Clevis w/ Roller	Clevis w/ Roller	5.5
FGS21-96RR	21,000	96	104	Clevis w/ Roller	Clevis w/ Roller	5.9
FGS21-120RR	21,000	120	128	Clevis w/ Roller	Clevis w/ Roller	6.5
FGS21-144RR	21,000	144	152	Clevis w/ Roller	Clevis w/ Roller	7.0

#### Notes:

1. Custom lengths available, contact factory or local sales representatives



# FIBERGLASS GUY STRAIN INSULATORS

## 21,000 Pound Rating: Clevis & Thimble Eye



### Material Specifications

#### End Fitting

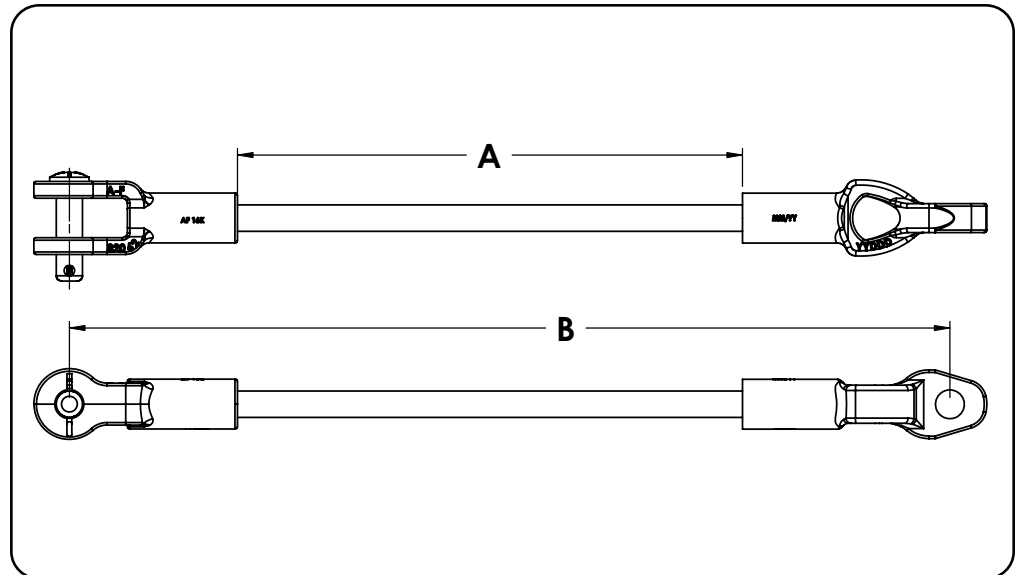
- 65-45-12 Ductile Iron, hot-dipped galvanized per ASTM A153

#### Fiberglass Rod

- Super-Smooth™, proprietary veiled gray polyester rod with added ultraviolet protection

#### Minimum Ultimate Strength Rating

- 21,000 pounds



Catalog Name	Strength, lbs.	Length "A", inches <sup>1</sup>	Length "B", inches	1st End Fitting	2nd End Fitting	Weight, lbs
FGS21-12CT	21,000	12	20.9	Clevis	Thimble Eye	3.2
FGS21-18CT	21,000	18	26.9	Clevis	Thimble Eye	3.3
FGS21-24CT	21,000	24	32.9	Clevis	Thimble Eye	3.4
FGS21-36CT	21,000	36	44.9	Clevis	Thimble Eye	3.7
FGS21-42CT	21,000	42	50.9	Clevis	Thimble Eye	3.8
FGS21-54CT	21,000	54	62.9	Clevis	Thimble Eye	4.1
FGS21-60CT	21,000	60	68.9	Clevis	Thimble Eye	4.2
FGS21-78CT	21,000	78	86.9	Clevis	Thimble Eye	4.6
FGS21-96CT	21,000	96	104.9	Clevis	Thimble Eye	5.0
FGS21-120CT	21,000	120	128.9	Clevis	Thimble Eye	5.6
FGS21-144CT	21,000	144	152.9	Clevis	Thimble Eye	6.1

#### Notes:

1. Custom lengths available, contact factory or local sales representatives





# FIBERGLASS GUY STRAIN INSULATORS

## 21,000 Pound Rating: Clevis w/ Roller & Thimble Eye



### Material Specifications

#### End Fitting

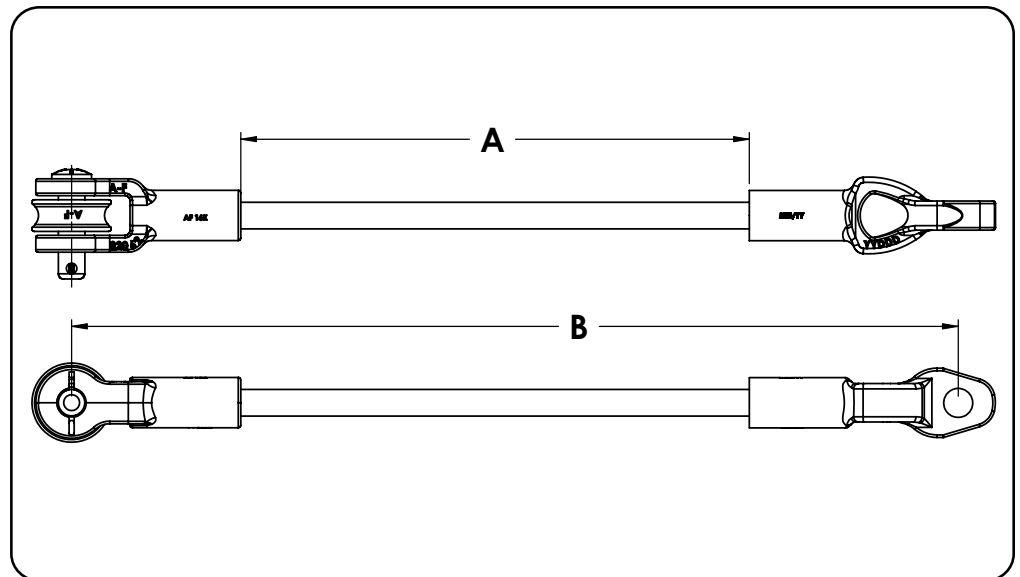
- 65-45-12 Ductile Iron, hot-dipped galvanized per ASTM A153

#### Fiberglass Rod

- Super-Smooth™, proprietary veiled gray polyester rod with added ultraviolet protection

#### Minimum Ultimate Strength Rating

- 21,000 pounds



Catalog Name	Strength, lbs.	Length "A", inches <sup>1</sup>	Length "B", inches	1st End Fitting	2nd End Fitting	Weight, lbs
FGS21-12RT	21,000	12	20.9	Clevis w/ Roller	Thimble Eye	3.6
FGS21-18RT	21,000	18	26.9	Clevis w/ Roller	Thimble Eye	3.7
FGS21-24RT	21,000	24	32.9	Clevis w/ Roller	Thimble Eye	3.8
FGS21-36RT	21,000	36	44.9	Clevis w/ Roller	Thimble Eye	4.1
FGS21-42RT	21,000	42	50.9	Clevis w/ Roller	Thimble Eye	4.2
FGS21-54RT	21,000	54	62.9	Clevis w/ Roller	Thimble Eye	4.5
FGS21-60RT	21,000	60	68.9	Clevis w/ Roller	Thimble Eye	4.6
FGS21-78RT	21,000	78	86.9	Clevis w/ Roller	Thimble Eye	5.0
FGS21-96RT	21,000	96	104.9	Clevis w/ Roller	Thimble Eye	5.4
FGS21-120RT	21,000	120	128.9	Clevis w/ Roller	Thimble Eye	6.0
FGS21-144RT	21,000	144	152.9	Clevis w/ Roller	Thimble Eye	6.5

#### Notes:

1. Custom lengths available, contact factory or local sales representatives



# FIBERGLASS GUY STRAIN INSULATORS

## 21,000 Pound Rating: Thimble Eye & Thimble Eye



### Material Specifications

#### End Fitting

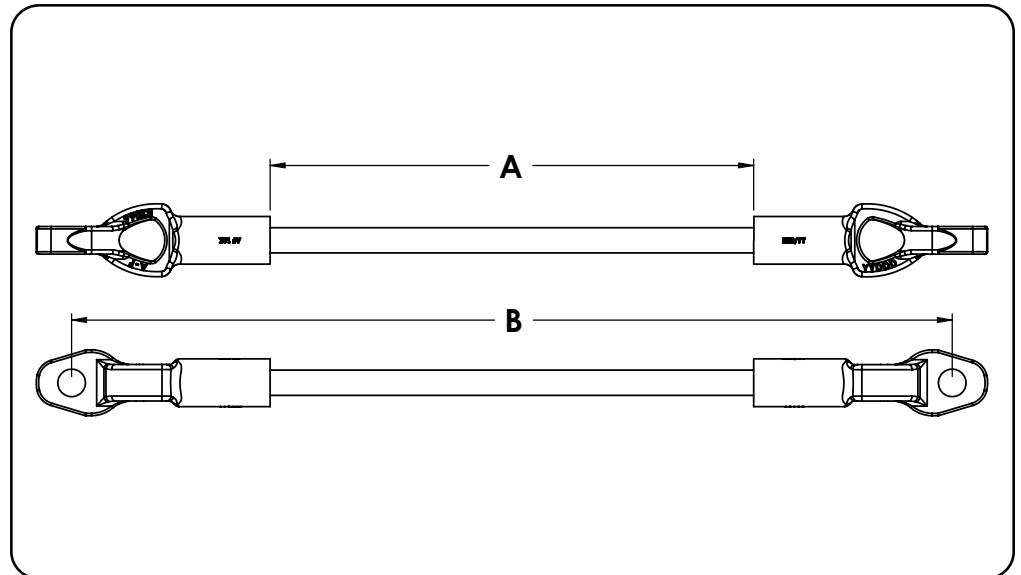
- 65-45-12 Ductile Iron, hot-dipped galvanized per ASTM A153

#### Fiberglass Rod

- Super-Smooth™, proprietary veiled gray polyester rod with added ultraviolet protection

#### Minimum Ultimate Strength Rating

- 21,000 pounds



Catalog Name	Strength, lbs.	Length "A", inches <sup>1</sup>	Length "B", inches	1st End Fitting	2nd End Fitting	Weight, lbs
FGS21-12TT	21,000	12	21.9	Thimble Eye	Thimble Eye	3.1
FGS21-18TT	21,000	18	27.9	Thimble Eye	Thimble Eye	3.2
FGS21-24TT	21,000	24	33.9	Thimble Eye	Thimble Eye	3.3
FGS21-36TT	21,000	36	45.9	Thimble Eye	Thimble Eye	3.6
FGS21-42TT	21,000	42	51.9	Thimble Eye	Thimble Eye	3.7
FGS21-54TT	21,000	54	63.9	Thimble Eye	Thimble Eye	4.0
FGS21-60TT	21,000	60	69.9	Thimble Eye	Thimble Eye	4.1
FGS21-78TT	21,000	78	87.9	Thimble Eye	Thimble Eye	4.5
FGS21-96TT	21,000	96	105.9	Thimble Eye	Thimble Eye	4.9
FGS21-120TT	21,000	120	129.9	Thimble Eye	Thimble Eye	5.5
FGS21-144TT	21,000	144	153.9	Thimble Eye	Thimble Eye	6.0

#### Notes:

1. Custom lengths available, contact factory or local sales representatives



# FIBERGLASS GUY STRAIN INSULATORS

## 21,000 Pound Rating: Thimble Eye & Y-Clevis



### Material Specifications

#### End Fitting

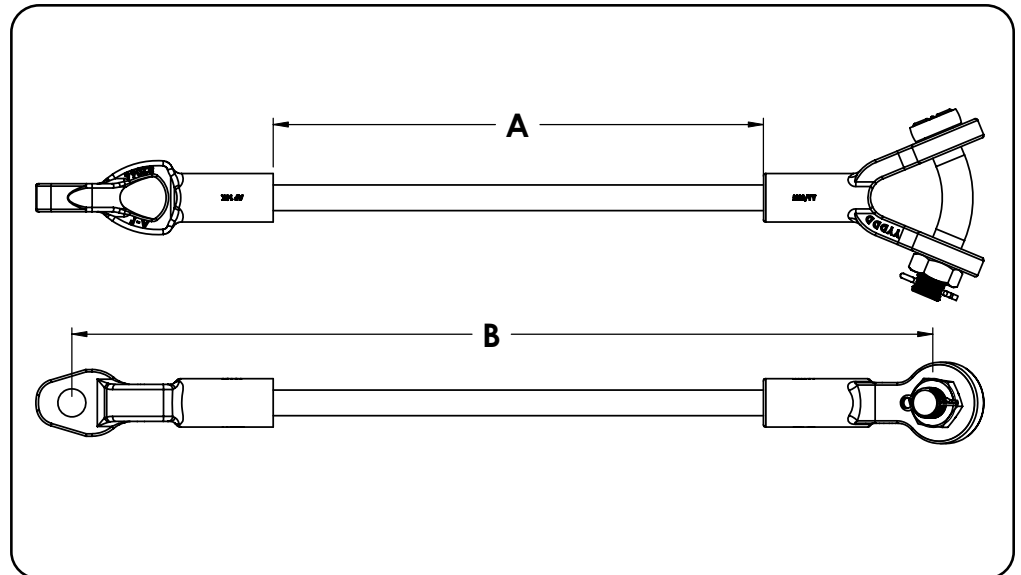
- 65-45-12 Ductile Iron, hot-dipped galvanized per ASTM A153

#### Fiberglass Rod

- Super-Smooth™, proprietary veiled gray polyester rod with added ultraviolet protection

#### Minimum Ultimate Strength Rating

- 21,000 pounds



Catalog Name	Strength, lbs.	Length "A", inches <sup>1</sup>	Length "B", inches	1st End Fitting	2nd End Fitting	Weight, lbs
FGS21-12TY	21,000	12	21.3	Thimble Eye	Y-Clevis	4.0
FGS21-18TY	21,000	18	27.3	Thimble Eye	Y-Clevis	4.2
FGS21-24TY	21,000	24	33.3	Thimble Eye	Y-Clevis	4.3
FGS21-36TY	21,000	36	45.3	Thimble Eye	Y-Clevis	4.6
FGS21-42TY	21,000	42	51.3	Thimble Eye	Y-Clevis	4.7
FGS21-54TY	21,000	54	63.3	Thimble Eye	Y-Clevis	4.9
FGS21-60TY	21,000	60	69.3	Thimble Eye	Y-Clevis	5.1
FGS21-78TY	21,000	78	87.3	Thimble Eye	Y-Clevis	5.5
FGS21-96TY	21,000	96	105.3	Thimble Eye	Y-Clevis	5.9
FGS21-120TY	21,000	120	129.3	Thimble Eye	Y-Clevis	6.4
FGS21-144TY	21,000	144	153.3	Thimble Eye	Y-Clevis	6.9

#### Notes:

1. Custom lengths available, contact factory or local sales representatives



**ALUMA-FORM®**

**3625 Old Getwell Rd. / Memphis, TN 38118 / P.O. Box 18555 / Memphis, TN 38181-0555 / Phone 901-362-0100 / Fax 901-794-9515**

**[www.alumaform.com](http://www.alumaform.com)**

©2010 Aluma Form, Inc. 1/10/1M Catalog GS-1