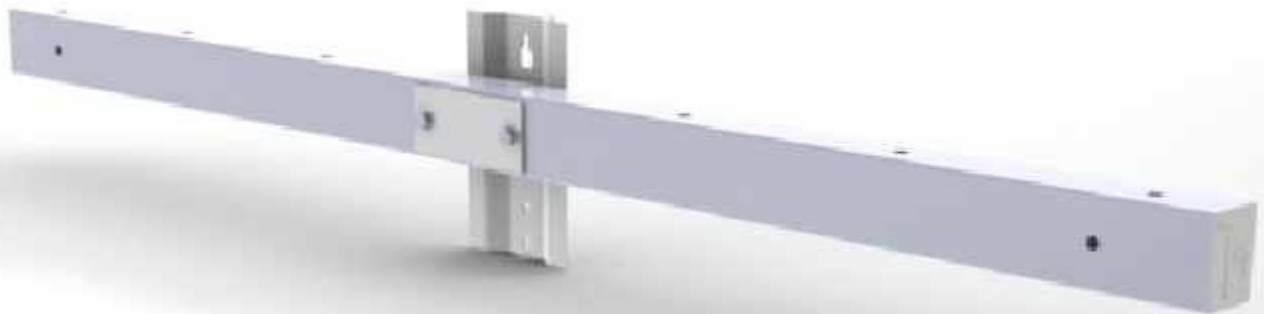




# FIBERGLASS DEAD-ENDS & TANGENT ARMS





# FIBERGLASS DEAD-ENDS & TANGENT ARMS

## **The Best Option for Fiberglass Dead-End & Tangent Arms!**

Fiberglass Dead-End Arms and Tangent Cross Arms are now available with the quality and performance you expect from Aluma-Form. Our dead-end arms are available a choice of pole gains (with and without guy attachments). Tangent arms are offer with our high strength Aluminum Pole Gain.

### **The Aluma-Form Advantage: Superior Performance**

Our fiberglass tubes provide superior strength and durability. Aluma-Form's proprietary veiled fiberglass design provides superior UV, tracking and abrasion resistance.

## Aluma-Form Quality

Aluma-Form has a long history of providing quality products for the Electric Utility industry. You can expect the same quality in every Dead-End Arm and/or Tangent Cross Arm you receive, helping the job get done right the first time.

## Speed and Flexibility

Need your Dead-End or Tangents custom designed? No problem – just contact us or your local representative. With the best lead-times in the industry, Aluma-Form can deliver your arms when you need them!



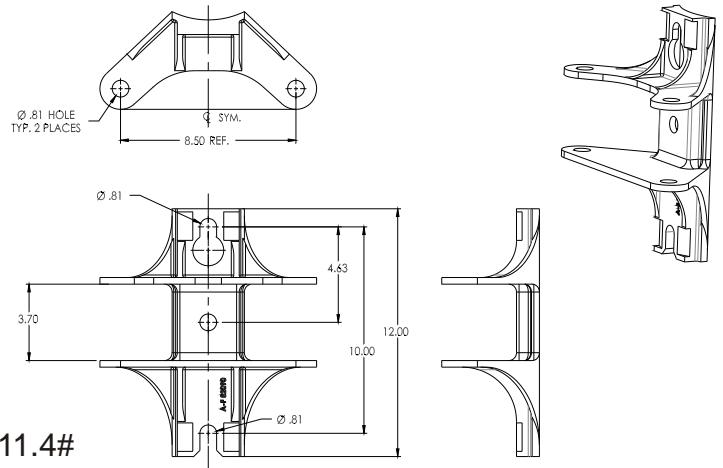
# FIBERGLASS DEAD-END ARM POLE GAINS

## FDA-D

### Material Specifications

#### Pole Gain

- 65-45-12 Ductile Iron, hot-dip galvanized per ASTM A153 (12" mounting centers)
- Accepts 3/4" pole mounting hardware
- Can be banded using the Aluma-Form Bolt-A-Band™ banding system



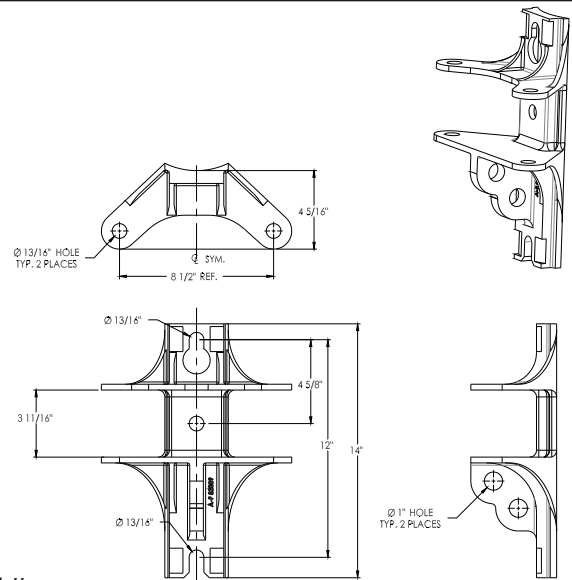
Weight - 11.4#

## FDA-DG

### Material Specifications

#### Pole Gain

- 65-45-12 Ductile Iron, hot-dip galvanized per ASTM A153 (12" mounting centers)
- 2 guy attachment positions - rated at 30,000# per hole
- Accepts 3/4" pole mounting hardware
- Can be banded using the Aluma-Form Bolt-A-Band™ banding system



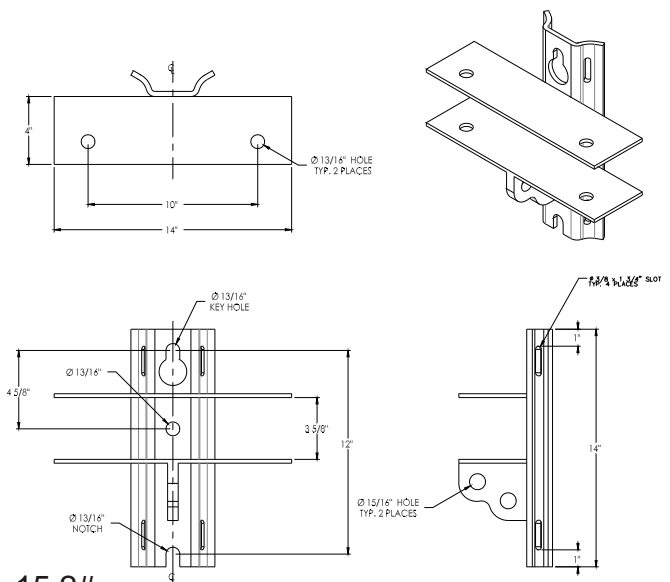
Weight - 14.1#

## FDA-FG

### Material Specifications

#### Pole Gain

- Hot rolled steel, continuous welds, galvanized per ASTM A153 (12" mounting centers)
- 2 guy attachment positions - rated at 30,000# per hole
- Accepts 3/4" pole mounting hardware
- Can be banded using the Aluma-Form Bolt-A-Band™ banding system



Weight - 15.2#



ALUMA-FORM®

# FIBERGLASS DEAD-END ARMS

**FDA - 20 - 2 - 120 - EB - DG**

**Fiberglass Dead-end Arm**

**Strength Class**

- 20 - Standard Duty
- 25 - Heavy Duty
- 30 - Extra Heavy Duty

**Number of Conductors**

- 2 - 2 wire
- 3 - 3 wire \*
- 4 - 4 wire
- 3/4 - 3 or 4 wire \*

**Length of arm**

- 96 = 8' arm
- 120 = 10' arm
- 144 = 12' arm

**Eye Bolt options**

- EB = Double Eye Bolts
- SB = Single Eye Bolts
- NB = No Eye Bolts

**Pole Gain Options**

- D = Ductile gain (no guying)
- DG = Ductile gain w/ 2GA
- FG = Fabricated gain w/ 2GA

\* - 3 & 3/4 arms with center phase hardware used in single-sided applications are limited to an 85% ultimate load



# FIBERGLASS DEAD-END ARMS

ALUMA-FORM®

## FDA20 Series

2-wire & 4-wire

### Material Specifications

#### Pole Gain

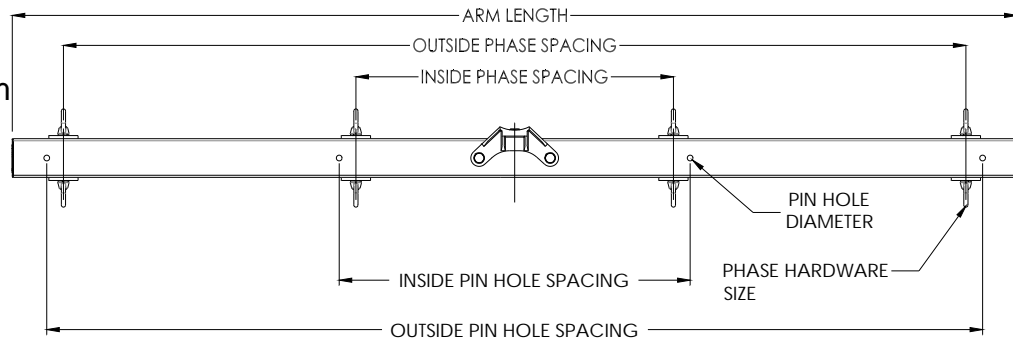
- 65-45-12 Ductile Iron, hot-dipped galvanized per ASTM A153 (12" mounting centers)
- 2 guy attachment positions - rated at 30,000# per hole
- Accepts 3/4" pole mounting hardware
- Can be banded using the Aluma-Form Bolt-A-Band™ banding system

#### Fiberglass Tube

- 3-5/8" X 4-5/8" Super-Smooth™, proprietary veiled gray polyester tube with added ultraviolet protection



FDA20-2-96-EB-DG (Shown above)



Aluma-Form Catalog Name	Balanced Horizontal Load Capacity	Length	Pin Hole Information			Phase Information				Deflection per 1000 lbs	Weight
			Pin Hole Diameter	Inside Spacing	Outside Spacing	# of Phases	Phase Hardware Size	Inside Phase Spacing	Outside Phase Spacing		
FDA20-2-60-EB-DG	9000	60	11/16	34	52	2	5/8"	-	48	0.18	35.3
FDA20-2-96-EB-DG	8000	96	11/16	34	88	2	5/8"	-	84	0.47	41.5
FDA20-4-96-EB-DG	6000	96	11/16	34	88	4	5/8"	30	84	0.85	49.9
FDA20-2-120-EB-DG	6500	120	11/16	42	112	2	5/8"	-	108	0.95	45.6
FDA20-4-120-EB-DG	5000	120	11/16	42	112	4	5/8"	38	108	1.58	54

#### Notes:

1. Custom drilling available, contact factory or local sales representative.
2. Standard hardware includes 5/8" Eye Nuts, bolts, & lock washers.
3. Use a "-D" option for pole gain without guying option
4. For eye bolts on one side of arm change "EB" to "SB"



# ALUMA-FORM<sup>®</sup> FDA25 Series

2-wire, 4-wire

# FIBERGLASS DEAD-END ARMS

## Material Specifications

### Pole Gain

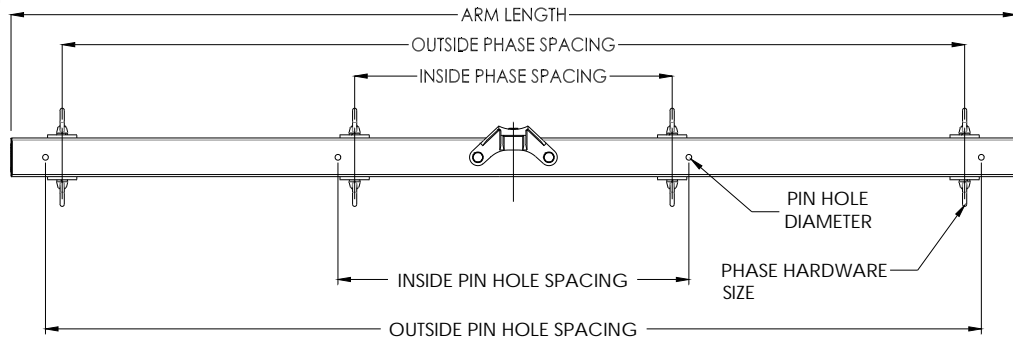
- 65-45-12 Ductile Iron, hot-dipped galvanized per ASTM A153 (12" mounting centers)
- 2 guy attachment positions - rated at 30,000# per hole
- Accepts 3/4" pole mounting hardware
- Can be banded using the Aluma-Form Bolt-A-Band<sup>™</sup> banding system

### Fiberglass Tube

- 3-5/8" X 4-5/8" Super-Smooth<sup>™</sup>, proprietary veiled gray polyester tube with added ultraviolet protection



FDA25-2-96-EB-DG (Shown above)



Aluma-Form Catalog Name	Balanced Horizontal Load Capacity	Length	Pin Hole Information			Phase Information				Deflection per 1000 lbs	Weight
			Pin Hole Diameter	Inside Spacing	Outside Spacing	# of Phases	Phase Hardware Size	Inside Phase Spacing	Outside Phase Spacing		
FDA25-2-60-EB-DG	10000	60	11/16	34	52	2	5/8"	-	48	0.18	36.1
FDA25-2-96-EB-DG	10000	96	11/16	34	88	2	5/8"	-	84	0.38	42.84
FDA25-4-96-EB-DG	7500	96	11/16	34	88	4	5/8"	30	84	0.62	51.3
FDA25-2-120-EB-DG	7500	120	11/16	42	112	2	5/8"	-	108	0.71	47.3
FDA25-4-120-EB-DG	6000	120	11/16	42	112	4	5/8"	38	108	0.98	55.7
FDA25-2-144-EB-DG	6000	144	11/16	-	136	2	5/8"	-	132	1.25	51.8
FDA25-4-144-EB-DG	4200	144	11/16	60	136	4	5/8"	68	132	1.76	60.2

### Notes:

1. Custom drilling available, contact factory or local sales representative.
2. Standard hardware includes 5/8" Eye Nuts, bolts, & lock washers.
3. Use a "-D" option for pole gain without guying option
4. For eye bolts on one side of arm change "EB" to "SB"



# ALUMA-FORM<sup>®</sup> FDA30 Series

2-wire, 4-wire

# FIBERGLASS DEAD-END ARMS

## Material Specifications

### Pole Gain

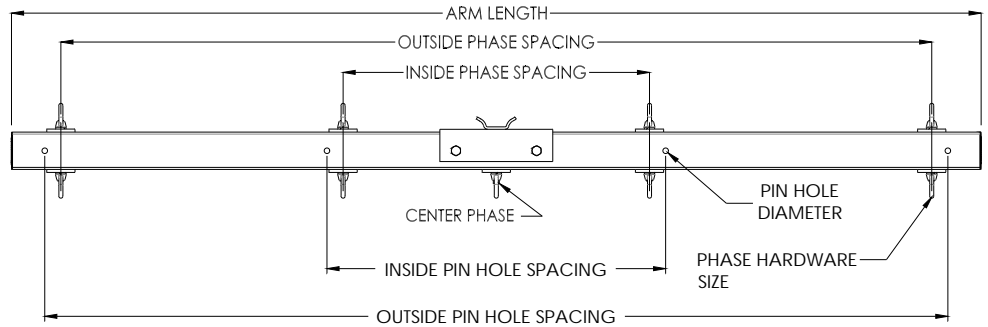
- 65-45-12 Ductile Iron, hot-dipped galvanized per ASTM A153 (12" mounting centers)
- 2 guy attachment positions - rated at 30,000# per hole
- Accepts 3/4" pole mounting hardware
- Can be banded using the Aluma-Form Bolt-A-Band<sup>™</sup> banding system

### Fiberglass Tube

- 3-5/8" X 4-5/8" Super-Smooth<sup>™</sup>, proprietary veiled gray polyester tube with added ultraviolet protection



FDA30-2-96-EB-FG (Shown above)



Aluma-Form Catalog Name	Balanced Horizontal Load Capacity	Length	Pin Hole Information			Phase Information				Deflection per 1000 lbs	Weight
			Pin Hole Diameter	Inside Spacing	Outside Spacing	# of Phases	Phase Hardware Size	Inside Phase Spacing	Outside Phase Spacing		
FDA30-2-60-EB-FG	14700	60	13/16	34	52	2	3/4"	-	48	0.13	37.4
FDA30-2-96-EB-FG	14700	96	13/16	34	88	2	3/4"	-	84	0.33	44.1
FDA30-4-96-EB-FG	11300	96	13/16	34	88	4	3/4"	30	84	0.54	53
FDA30-2-120-EB-FG	13000	120	13/16	42	112	2	3/4"	-	108	0.61	48.6
FDA30-4-120-EB-FG	10000	120	13/16	42	112	4	3/4"	38	108	0.89	57.5
FDA30-2-144-EB-FG	10000	144	13/16	-	136	2	3/4"	-	132	1.07	53.1
FDA30-4-144-EB-FG	7000	144	13/16	60	136	4	3/4"	68	132	1.45	62

### Notes:

1. Custom drilling available, contact factory or local sales representative.
2. Standard hardware includes 3/4" Eye Nuts, bolts, & lock washers.
3. Use a "-D" option for pole gain without guying option
4. For eye bolts on one side of arm change "EB" to "SB"





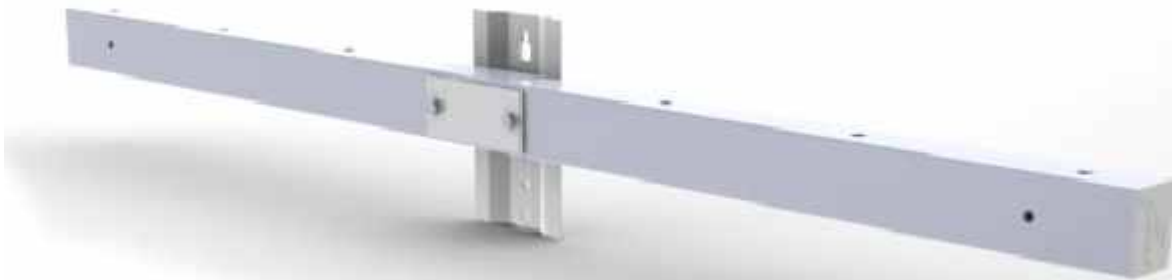
# FIBERGLASS TANGENT ARMS



FTA30 SERIES



FTA25 SERIES



FTA20L & FTA20 SERIES



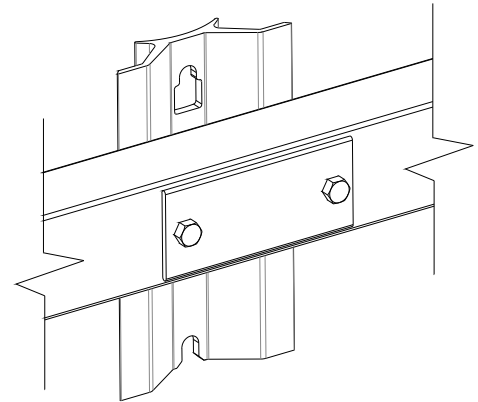


# FIBERGLASS TANGENT ARM POLE GAINS

## FTA20L & FTA20

### Pole Gain

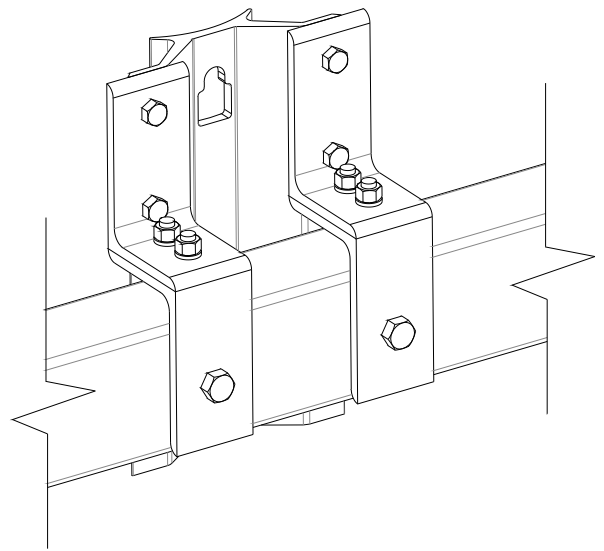
- 6061-T6 Aluminum Pole Gain with 8", 10", & 12" mounting centers
- Accepts 5/8" pole mounting hardware
- Can be banded using the Aluma-Form Bolt-A-Band™ banding system



## FTA25

### Pole Gain

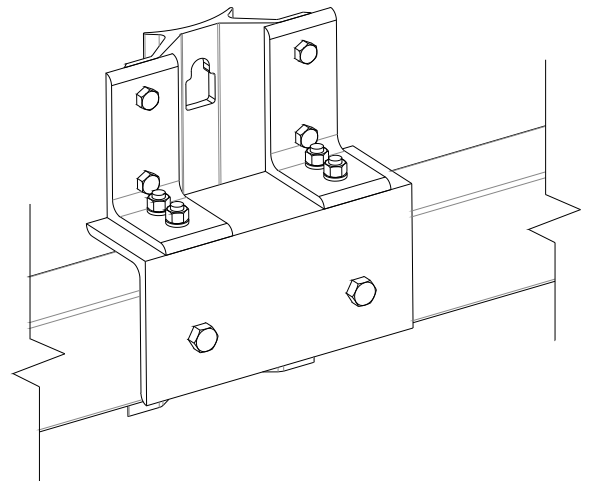
- 6061-T6 Aluminum Pole Gain with 12" mounting centers
- Accepts 5/8" pole mounting hardware
- Can be banded using the Aluma-Form Bolt-A-Band™ banding system



## FTA30

### Pole Gain

- 6061-T6 Aluminum Pole Gain with 12" mounting centers
- Accepts 3/4" pole mounting hardware
- Can be banded using the Aluma-Form Bolt-A-Band™ banding system





ALUMA-FORM®

# FIBERGLASS TANGENT ARMS

**FTA - 20 - 2 - 120 - A**

**Fiberglass Tangent Arm**

**Strength Class**

- 20L - Light Duty
- 20 - Standard Duty
- 25 - Heavy Duty
- 30 - Extra Heavy Duty

**Number of Insulator Pin Locations**

- 2 - 2 Pin Locations
- 4 - 4 Pin Locations
- 6 - 6 Pin Locations

**Length of arm**

- 96 = 8' arm
- 120 = 10' arm
- 144 = 12' arm

**Construction Type**

- A = Braceless Construction
- B = Braced Construction



# FIBERGLASS TANGENT ARMS

ALUMA-FORM®

## FTA20L & FTA20 Series

### Material Specifications

#### Pole Gain

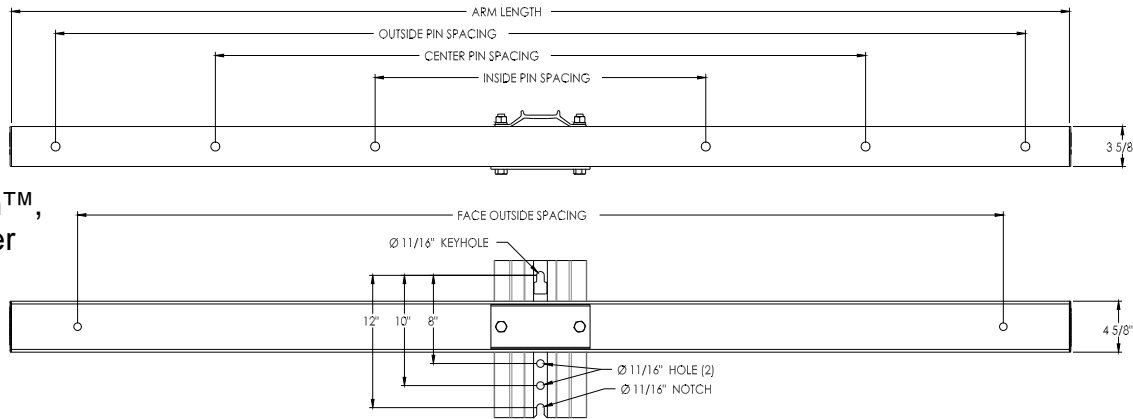
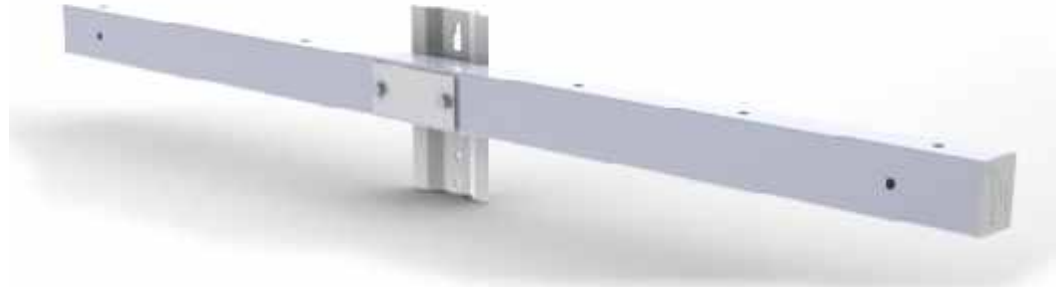
- 6061-T6 Aluminum Pole Gain with 8", 10", & 12" mounting centers

- Accepts 5/8" mounting hardware

- Can be banded using the Aluma-Form Bolt-A-Band™ banding system

#### Fiberglass Tube

- 3-5/8" X 4-5/8" Super-Smooth™, proprietary veiled gray polyester tube with added ultraviolet protection



Catalog Name	Balanced Vertical Load per side	Length	Face Hole Diameter	Face Hole Spacing	Insulator Pin Positions	Phase hole diameter (Top)	Inside	Center	Outside	Deflection per 1000 lbs	Weight
FTA20L-4-60-A	6200	60	11/16"	48	4	11/16"	23	-	52	0.3	17.2
FTA20L-4-96-A	6100	96	11/16"	84	4	11/16"	30	-	88	0.59	23.6
FTA20L-6-96-A	6100	96	11/16"	84	6	11/16"	30	59	88	0.59	23.6
FTA20L-6-120-A	5000	120	11/16"	108	6	11/16"	38	75	112	1.13	28.2
FTA20L-4-144-A	3800	144	11/16"	132	4	11/16"	76	-	136	2.21	32.2
FTA20-4-60-A	6500	60	11/16"	48	4	11/16"	23	-	52	0.24	17.8
FTA20-4-96-A	6400	96	11/16"	84	4	11/16"	30	-	88	0.43	24.5
FTA20-6-96-A	6400	96	11/16"	84	6	11/16"	30	59	88	0.43	24.5
FTA20-6-120-A	5400	120	11/16"	108	6	11/16"	38	75	112	0.77	28.9
FTA20-4-144-A	4200	144	11/16"	132	4	11/16"	76	-	136	1.2	33.5

#### Notes:

1. Custom drilling available, contact factory or local sales representative.



# FIBERGLASS TANGENT ARMS

ALUMA-FORM®

## FTA25 Series

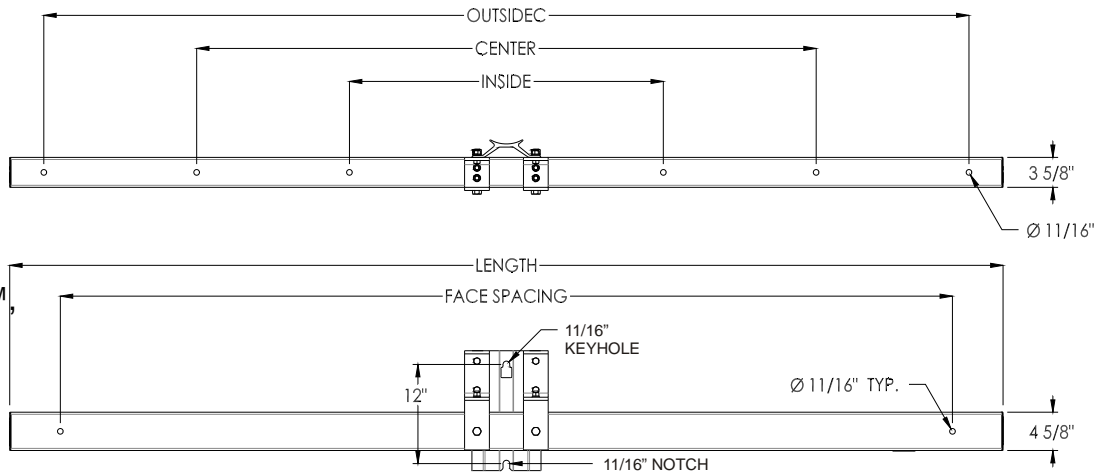
### Material Specifications

#### Pole Gain

- 6061-T6 Aluminum Pole Gain with 12" mounting centers
- Accepts 5/8" pole mounting hardware
- Can be banded using the Aluma-Form Bolt-A-Band™ banding system

#### Fiberglass Tube

- 3-5/8" X 4-5/8" Super-Smooth™ proprietary veiled gray polyester tube with added ultraviolet protection



Catalog Name	Balanced Vertical Load per side	Length	Face Hole Diameter	Face Hole Spacing	Insulator Pin Positions	Phase hole diameter (Top)	Inside	Center	Outside	Deflection per 1000 lbs	Weight
FTA25-4-60-A	7500	60	11/16"	48	4	11/16"	23	-	52	0.19	21.4
FTA25-4-96-A	7500	96	11/16"	84	4	11/16"	30	-	88	0.55	27.8
FTA25-6-96-A	7500	96	11/16"	84	6	11/16"	30	59	88	0.55	27.8
FTA25-6-120-A	6000	120	11/16"	108	6	11/16"	38	75	112	1.06	31.8
FTA25-4-144-A	4800	144	11/16"	136	4	11/16"	76	-	132	1.33	36.3

#### Notes:

1. Custom drilling available, contact factory or local sales representative.



ALUMA-FORM®

# FIBERGLASS TANGENT ARMS

## FTA30 Series



### Material Specifications

#### Pole Gain

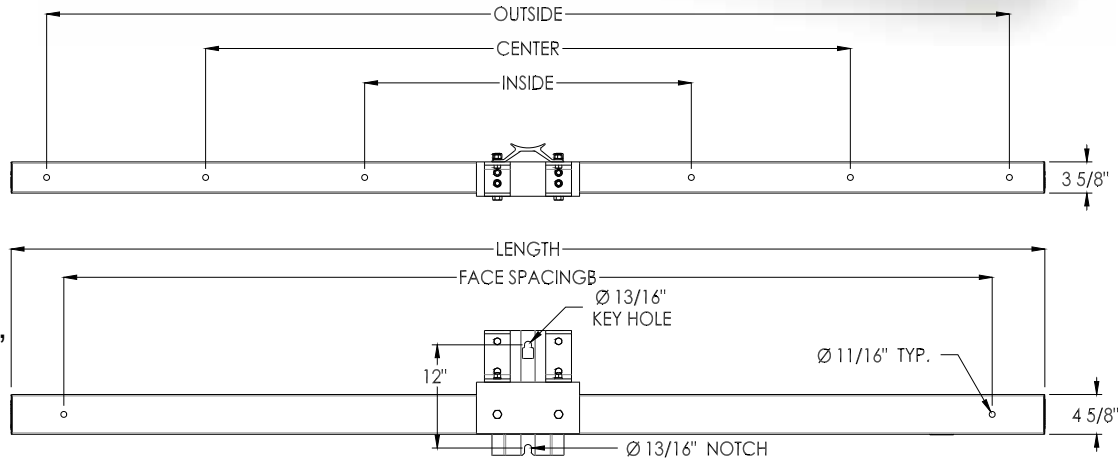
- 6061-T6 Aluminum Pole Gain with 12" mounting centers

- Accepts 3/4" pole mounting hardware

- Can be banded using the Aluma-Form Bolt-A-Band™ banding system

#### Fiberglass Tube

- 3-5/8" X 4-5/8" Super-Smooth™, proprietary veiled gray polyester tube with added ultraviolet protection



Catalog Name	Balanced Vertical Load per side	Length	Face Hole Diameter	Face Hole Spacing	Insulator Pin Positions	Phase hole diameter (Top)	Inside	Center	Outside	Deflection per 1000 lbs	Weight
FTA30-4-60-A	10000	60	11/16"	48	4	11/16"	23		52	0.15	24.06
FTA30-4-96-A	10000	96	13/16"	84	4	13/16"	30		88	0.39	30.8
FTA30-6-96-A	10000	96	13/16"	84	6	13/16"	30	59	88	0.39	30.8
FTA30-6-120-A	9400	120	13/16"	108	6	13/16"	38	75	112	0.71	35.2
FTA30-4-144-A	8000	144	13/16"	136	4	13/16"	76		132	1.23	39.7

#### Notes:

1. Custom drilling available, contact factory or local sales representative.